



RCSI + UCD MALAYSIA CAMPUS

**RUMC**

(MOHE: DULNOIO(P))

A Foreign University Branch Campus of



University College Dublin  
Ireland's Global University

# BUILD YOUR FUTURE IN MEDICINE

Take the first step of becoming a doctor with RUMC



## Foundation in Science

(R/010/3/0491) (12/27) (MQA/FA9105)

Scan for more info



RUMC (RCSI & UCD Malaysia Campus) stands as the distinguished Foreign University Branch Campus of the esteemed Royal College of Surgeons in Ireland (RCSI) and University College Dublin (UCD).

For more than 25 years, RUMC has proudly witnessed the graduation of over 2,100 doctors with prestigious medical degrees from the National University of Ireland (NUI).

These accomplished professionals are now making impactful contributions to the field of Medicine, practising in Malaysia, Ireland, the UK, the US, Australia, Canada and various other countries across the globe.

### The RUMC Advantage

The Foundation in Science (FIS) is a unique programme, offering students a Pre-University pathway to open doors to study medicine and similar degree programmes at world-renowned universities.

- ✓ Prepares students for entry into medical school.
- ✓ Teaches basic sciences applicable to Medicine.
- ✓ Allows interaction between Foundation students and their medical student seniors.
- ✓ Provides opportunities to interact with clinicians.

### Learning Outcome

Upon completion, students would have;

- ✓ Knowledge of the basic sciences and its application in medicine.
- ✓ Ability to engage in scientific topics by understanding basic concepts and the relevant terminologies.
- ✓ A range of fundamental study and communication skills.
- ✓ Developed English language skills.
- ✓ Developed basic laboratory skills in the basic sciences.
- ✓ Exposure to the clinical and caregiving aspects of the medical and healthcare professions.

**#RUMC**

# Intake

> July, August

# Tuition Fees

The 1-year tuition fees are as follows:

Malaysian Students	International Students
MYR 30,000	MYR 35,000

\*A fee of RM500 is payable upon submission of application.

# Scholarships

50% Scholarship
For students who obtained 6A's and above in their SPM / IGCSE (or equivalent)

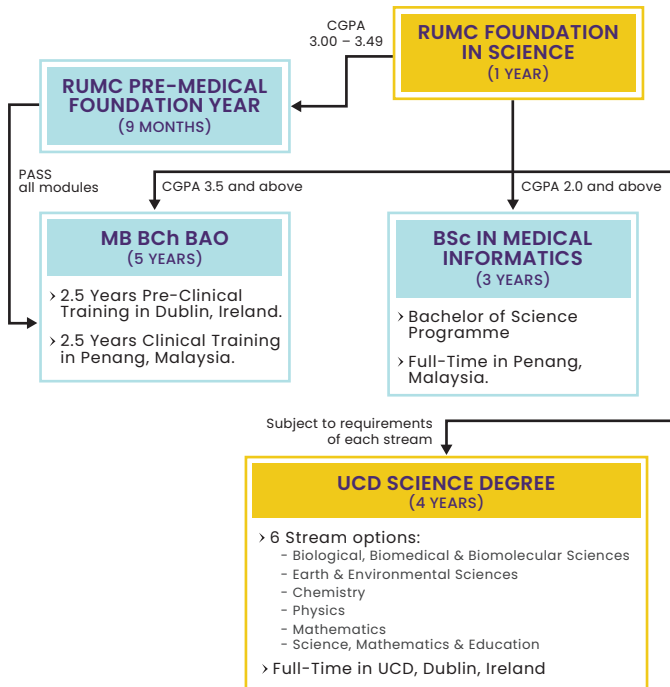
# Progression Pathway

Upon completion of the Foundation in Science programme;

**CGPA of 3.50 to 4.00** - Students are eligible to apply for a 5-year Medical Degree programme at RUMC.

**CGPA of 3.00 to 3.49** - Students are eligible to apply for the Pre-Medical Year programme at RUMC.

## Illustration of Pathway



# Entry Requirements

## SPM, IGCSE O-Level

3A's 2B's in Biology, Chemistry, Physics, Mathematics / Add Mathematics and one other subject (excluding languages).

## Unified Examination Certificate (UEC)

3 B4's in Biology, Chemistry, Physics, Advanced Mathematics I / Mathematics I or Advanced Mathematics II / Mathematics II

## Other Qualifications

Students with other qualifications will be considered on a case-to-case basis.

# Language Requirements

## English Language Requirements

> IELTS / TOEFL / CEFR qualifications are to be submitted during application.

## Bahasa Melayu (SPM Level)

> For Malaysian students, a minimum pass in SPM BM is not required upon admission, however, before the medical degree programme is completed.

# Programme Delivery

## Semester 1

- > General Physics 1
- > General Chemistry 1
- > General Biology 1
- > General Mathematics
- > Language, Communication & Study Skills 1
- > Basic IT

## Semester 2

- > General Physics 2
- > General Chemistry 2
- > Human Systems 1
- > Languages and Communication Skills 2
- > Professionalism in the Health Sciences

## Semester 3

- > Physics for Health Sciences
- > Chemistry for Health Sciences
- > Human Systems 2
- > Introduction to Diseases, Diagnostics, Therapeutics
- > Elective Projects

# Words from Our Student



## Wendy Loo

RUMC Foundation in Science Former Student  
RUMC Medical Student (Class of 2027)

"The Foundation in Science Programme has further inspired my passion to pursue Medicine. I enjoyed my time in this programme as I took interest in the materials taught each day. The lecturers were clear, supportive and readily available."

## RUMC (RCSI & UCD MALAYSIA CAMPUS) (MOHE: DULNOIO(P))

4 Jalan Sepoy Lines, 10450 George Town, Penang, Malaysia

+604 217 1999

enquiry@rumc.edu.my

rumc.edu.my

/RCSIUCDMalaysia

@RCSIUCDMalaysia

FIS/6/2024

Copyright © 2024 RCSI & UCD Malaysia Campus [MOHE: DULNOIO(P)].

All rights reserved. The information in this brochure is correct at the time of printing and is subject to alteration. Please visit rumc.edu.my for detailed information.

Penang Medical College Sdn. Bhd. (265542-K)

Speak with us



Get in touch with us and start your pathway to excellence with RUMC in medical education.

Apply Now

